



WOOL CLASSICS

LONDON

# Camargue

The Camargue range comes in three distinct designs: Salt, Beach, and Ocelot.  
These fun designs can be used both as a carpet and rug with the edging of your choice..

Beach Carnation



Beach Forget Me Not



Beach Hyacinth



Beach Orchid



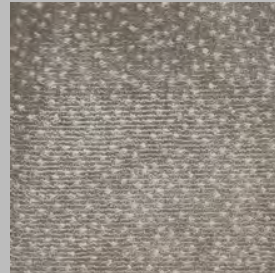
Beach Sakura



Beach Tiger Lily



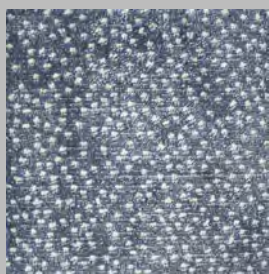
Salt Carnation



Salt Forget Me Not



Salt Hyacinth



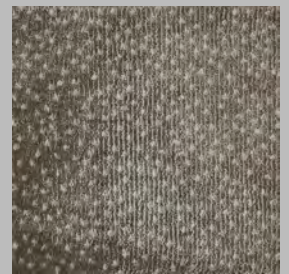
Salt Orchid



Salt Sakura



Salt Tiger Lily



205 Design Centre East  
Chelsea Harbour  
London  
SW10 0XF

T: +44 (0) 20 7349 1560  
[sales@woolclassics.com](mailto:sales@woolclassics.com)  
[www.woolclassics.com](http://www.woolclassics.com)



WOOL CLASSICS

LONDON

Ocelot Carnation



Ocelot Forget Me Not



Ocelot Hyacinth



Ocelot Orchid



Ocelot Sakura



Ocelot Tiger Lily



205 Design Centre East  
Chelsea Harbour  
London  
SW10 0XF

T: +44 (0) 20 7349 1560  
[sales@woolclassics.com](mailto:sales@woolclassics.com)  
[www.woolclassics.com](http://www.woolclassics.com)



WOOL CLASSICS

LONDON

# Camargue

Structure -	Cut Hair
Construction -	Wilton
Pile Yarn -	100% Tencel
Backing Material -	Jute & Cotton
Width -	4.00m
Pile Height -	7.0mm
Total Carpet Thickness -	9.0mm
Pile Weight -	2,100 grams/m <sup>2</sup>
Total Weight -	2,900 grams/m <sup>2</sup>
Suitability -	Class 23 Domestic Heavy
Suitable For Stairs -	No
Fire Classification	Cfl-s1
EC Standard	Certified

205 Design Centre East  
Chelsea Harbour  
London  
SW10 0XF

T: +44 (0) 20 7349 1560  
[sales@woolclassics.com](mailto:sales@woolclassics.com)  
[www.woolclassics.com](http://www.woolclassics.com)